



CASSAVA PEELING MACHINE





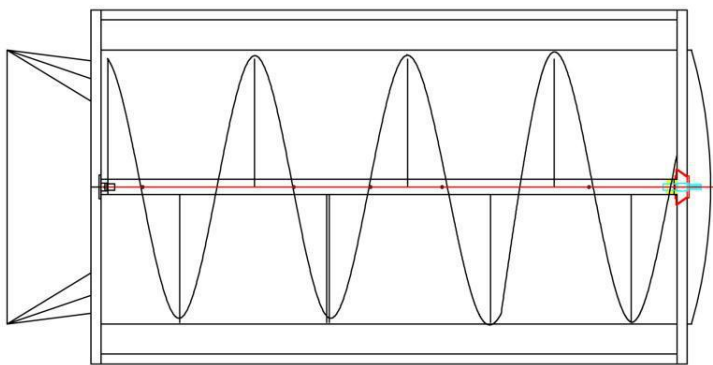
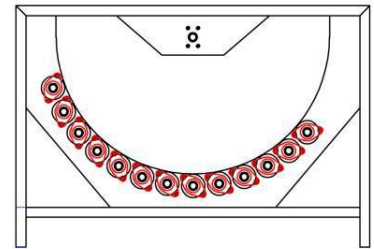
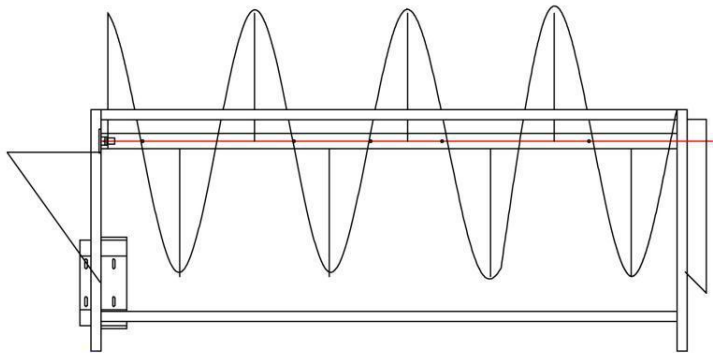
1. OVERVIEW

Cassava peeling machine is mainly used for removing outer peels (surface brown thin skins) and subcutaneous cuticle of cassava roots, it is the key equipment for cassava washing and peeling, widely used in the pretreatment of raw materials for GARRI production line, cassava chips processing and cassava flour full set equipment plant. All parts contact with material are stainless steel, no material corrosion, advanced surface treatment technology ensuring it good looking and resistance of oil and dirty; The cassava peeling machine is composed of equipment rack, upper cover, steel nail roller sets in the shell, pushing screw, flushing device, powerplants for steel nail roller sets and pushing screw; According to the differences in the material or skin, revolving speed of pushing screw is adjustable, which changes material friction time on steel nail roller to achieve supposed peeling effect, the cassava peeling machine could continuously peel cassava, which creates better peeling efficiency, better peeling effect, and better quality of final product; The cassava peeling machine is reasonably designed with simple & compact structure, great peeling effect and high production efficiency, which could efficiently promote product quality. So far, the cassava peeling machine is well received by large and medium-sized cassava flour processing enterprises. It is a high-quality machine produced by Goodway combined with international advanced technologies.



2. STRUCTURE AND PRINCIPLE

The cassava peeling machine is composed of equipment rack, upper cover, steel nail roller sets in the shell, pushing screw, flushing device, powerplants for steel nail roller sets and pushing screw, it is designed to finish the jobs of washing, peeling and conveying of cassava roots. The upper cover can effectively prevents the phenomenon of flying and splashing of cassava peels during the peeling process; The rotating speed of steel nail roller sets is adjustable, rub the cassava roots staying on them strongly, remove the outer peels and subcutaneous cuticle of cassava roots with high efficiency and low loss; The pushing screw can adjust the rotating speed, which changes material friction time on steel nail roller to achieve supposed peeling effect, at the same time this structure can push the peeled materials to the discharge port; The flushing device can be used to wash the cassava roots during the peeling process, and clean up the equipment itself after the cassava peeling is completed; The powerplants are used to drive the steel nail roller sets and pushing screw, adjust the rotating speed of the steel nail roller sets and the pushing screw with the cooperation of the frequency conversion and speed regulating device.



3. MAIN FEATURES

- All parts contact with material are made of thick stainless steel, which is sturdy and durable, no material corrosion;
- The feeding port is setup outside the working area, the operation is safe;
- Adopt the structure of pushing screw, the rotating speed is adjustable, it could continuously peel cassava;
- The pushing screw is controlled by frequency converter, according to the differences in material or skin, revolving speed of pushing screw is adjustable, which changes material friction time on steel nail roller to achieve supposed peeling effect;

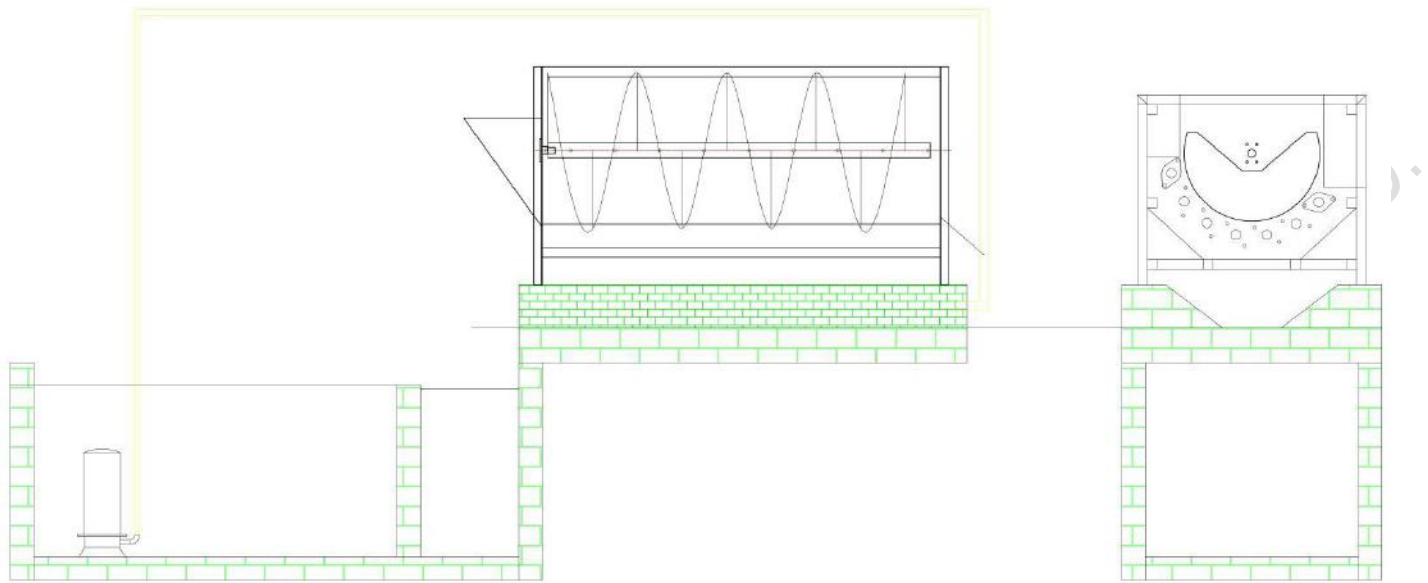


- High production efficiency, complete peeling and cleaning, the peeling rate is high, effectively guarantee the product quality;
- Optimal design of complete machine with large capacity, nice appearance and lower power & water consumption;
- Stable running, well matched motor configuration, easy for installation and maintenance.

4. INSTALLATION, USE AND MAINTENANCE

(1) INSTALLATION OF CASSAVA PEELING MACHINE

Make the foundation well according to the construction drawings, after the foundation is solidified, it's necessary to check the dimensions of each sections and confirm them to be qualified, then sling the equipment to place it on the foundation, and carry out the alignment correction of center, elevation and horizontal, using horizontal instrument to make it level, and horizontal error per meter can not be more than 0.1%, After making it level, it's practicable to fix the equipment and dock the conveying trough of materials, then smooth the foundation surface.



(2) USE AND OPERATION OF CASSAVA PEELING MACHINE

- Check if the water and electricity is connected well or not, ensure no water leakage or electricity leakage phenomenon;
- Power on the motor engines of the steel nail roller sets and pushing screw, in order to check if the rotation direction of them is the same as marked on machine or not;



- Turn on the flushing device and power on the motor engine of steel nail roller sets to let the steel nail roller sets idling, then power on the motor engine of pushing screw to adjust the frequency converter;
- Feed the materials into the machine, then pushing screw will push the materials slowly, observe the condition of materials peeling, and adjust the frequency converter to control the push speed of pushing screw, in order to achieve the best peeling effect. If it can't achieve the required peeling effect, you should power off the motor engine of pushing screw for a while to allow the materials to be washed and peeled sufficiently.

(3) PRECAUTIONS OF CASSAVA PEELING MACHINE

- It's best to place the machine on the flat and stable ground when you operate it;
- When starting up the machine, you must power on the motor engine of steel nail roller sets firstly, let the steel nail roller sets idling, then feed the materials into the machine;
- There must be no any materials stored in the machine when it stop running;



- If the power is suddenly lost during the process of washing and peeling, when you starting up the machine again, firstly you should remove the materials in the machine completely, then power on the motor and re-feed the materials into the machine again;
- Pay attention to clean up the body and interior of machine after shutting down the machine in time;
- You must turn off the power when clean up the body and interior of machine;
- It's practicable to use cloth to wipe or use water to wash the machine, pay attention to protect the motor engines when using water to wash the machine;
- You must feed the materials in the position of the feeding port, the pushing screw can achieve automatic materials separation, so please don't feed the materials in the other position of machine.

(4) MAINTENANCE

- Users should pay attention to the correct operation and timely maintenance during operating process, you must make sure to check the equipment to be clean up before running, and make sure it's washed up completely after running;



- Every time before this machine is used, check whether the lubricating oil of the reducer is added to the specified position of oil level line, if not, pay attention to adding lubricating oil, and the oil should be pure and free of impurities;
- Every time before this machine is used, check whether there is enough lubricating grease in the bearing. If not, pay attention to adding enough lubricating grease. The oil should be pure and free of impurities;
- After each processing season, the reducer of cassava peeling machine needs to add new lubricating oil, and the bearing needs to add new lubricating grease. Generally speaking, the reducer and bearing of the cassava peeling machine have been filled with the specified amount of lubricating oil and lubricating grease before delivery.

5. MAIN TECHNICAL SPECIFICATIONS

Model no.	GD-CP-1000 [without pushing screw]	GD-CP-1500 [with pushing screw]	GD-CP-2000 [with pushing screw]	GD-CP-3000 [with pushing screw]
Machine material	Stainless steel	Stainless steel	Stainless steel	Stainless steel
Capacity	500kg/hour	1000kg/hour	1500kg/hour	2000kg/hour
Power	2.2KW	3.0KW	3.0KW	4.0KW
Voltage&frequency	380V&50/60Hz	380V&50/60Hz	380V&50/60Hz	380V&50/60Hz
Rotate speed	Can be adjusted	Can be adjusted	Can be adjusted	Can be adjusted
Inner diameter of rotary drum	800mm	800mm	800mm	800mm
Inner length of rotary drum	1000mm	1500mm	2000mm	3000mm
Weight	325kg	450kg	750kg	950kg
Dimension (L×W×H)mm	1620×1090×860mm	2140×1045×1005mm	2745×1235×1325mm	3800×1300×1400mm